

Tourist Information Lohr am Main

Schlossplatz 5
97816 Lohr am Main

Tel: +49 9352 848465

tourismus@lohr.de
<http://www.lohr.de>

Information for people with walking difficulties and wheelchair users

Information on accessibility was evaluated and verified on October 9, 2024 as part of the quality criteria / system "Tourism for all".

Images of the building/object



Tourist Information
Lohr am Main

©Julia Marmulla



Tourist Information
Lohr am Main

©Julia Marmulla

Parking lot for people with disabilities



Parking lot for people
with disabilities

©Gisela Moser

Parking lot for people with disabilities



Parking lot for people
with disabilities

©Gisela Moser



Parking lot for people
with disabilities

©Julia Marmulla

There is a general parking lot available.

There is at least one parking space for people with disabilities.

There is/are 1 parking space(s) for people with disabilities.

Parking space width: 400 cm

Parking space length: 500 cm

The surface quality of the car park is not vibration free and is easy to walk and drive on (e.g. asphalt, narrow-jointed slabs, etc.).

Distance from the parking space(s) for people with disabilities to the entrance area: 60 m

The parking space(s) for people with disabilities is/are marked.

Additional information only available in German: The car park is located in the street 'Schloßplatz' in front of house number 12. There is a sign for residents' parking. According to the tourist information office, the car parking space for people with disabilities is excluded from this.

Path from the parking lot for people with disabilities to the tourist information office



Path from the parking lot for people with disabilities to the tourist information office

©Gisela Moser



Path from the parking lot for people with disabilities to the tourist information office

©Gisela Moser



Path from the parking lot for people with disabilities to the tourist information office

©Gisela Moser

Width of the path: 200 cm

Length of the path: 60 m

Due to its surface characteristics, the path is not vibration-free and easy to walk on (e.g. asphalt, narrow-jointed slabs, etc.).

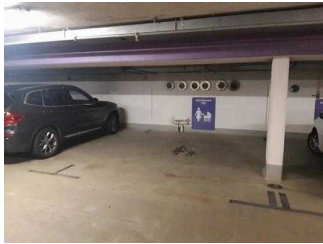
Maximum longitudinal gradient of the path: 0 %

Maximum longitudinal gradient over a distance of 60 m.

Additional information only available in German: The path runs without a sidewalk across a play street (walking speed).

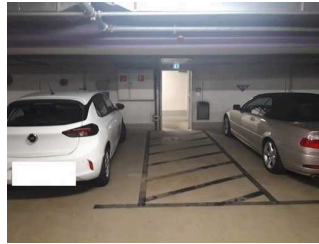
Additional parking in the underground car park

Additional parking in the underground car park – floor 5



Additional parking in the underground car park – floor 5

©Julia Marmulla



Additional parking in the underground car park – floor 5

©Julia Marmulla

There is a general parking lot available.

There is an underground car park directly below the tourist information office, but without parking spaces for people with disabilities. On floor 5 (1 floor below the TI) there are wider parking spaces for people with children (370 x 500 cm). The route from the car park is the same as from the WC area. In addition, a passageway must be passed. This passageway is 90 cm wide. The underground car park is due to be renovated soon (as of October 2024).

Stairs from floor 5 of the underground car park to the tourist information office



Stairs from floor 5 of the underground car park to the tourist information office

©Julia Marmulla



Stairs from floor 5 of the underground car park to the tourist information office

©Julia Marmulla

Existing thresholds/steps: 22

The height of the thresholds/steps: 17 cm

The stairs are not straight.

The staircase has handrails on both sides.

Elevator from floor 5 to the tourist information office



Elevator from floor 5 to the tourist information office

©Julia Marmulla



Elevator from floor 5 to the tourist information office

©Gisela Moser



Elevator from floor 5 to the tourist information office

©Gisela Moser

The WIDTH of the manoeuvring space in front of the elevator when entering: 200 cm

The DEPTH of the manoeuvring space in front of the elevator when entering: 200 cm

Clear passage width of the elevator door: 80 cm

The WIDTH of the cabin inside: 110 cm

The DEPTH of the cabin inside: 140 cm

The WIDTH of the manoeuvring space in front of the elevator when exiting: 178 cm

The DEPTH of the manoeuvring space in front of the elevator when exiting: 200 cm

There is no horizontal control panel.

The control elements/control units are arranged as follows:

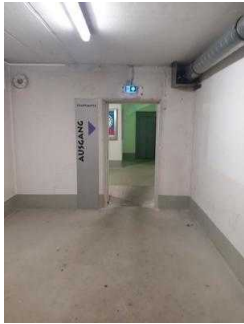
The HIGHEST position of the controls: 119 cm

The LOWEST position of the controls: 80 cm

The horizontal distance from the corner of the cabin to the first control element (central) is 40 cm.

Corridor/way/aisle inside

Corridor on floor 5 of the underground car park



Corridor on floor 5 of the underground car park

©Julia Marmulla



Corridor on floor 5 of the underground car park

©Julia Marmulla

Length of the corridor/way/aisle: 15 m

Minimum width of the corridor/way/aisle: 200 cm

Existing passageways are at least 88 cm wide.

Corridor in the entrance area: round arch – lift/stairs to the underground car park – tourist information office



Corridor in the entrance area: round arch – lift/stairs to the underground car park – tourist information office

©Julia Marmulla



Corridor in the entrance area: round arch – lift/stairs to the underground car park – tourist information office

©Julia Marmulla



Corridor in the entrance area: round arch – lift/stairs to the underground car park – tourist information office

©Julia Marmulla

Length of the corridor/way/aisle: 15 m

Minimum width of the corridor/way/aisle: 200 cm

Existing passageways are at least 88 cm wide.

Bus stop hospital



Bus stop hospital

©Julia Marmulla

Bus stop hospital



Bus stop hospital

©Julia Marmulla



Bus stop hospital

©Julia Marmulla



Bus stop hospital

©Julia Marmulla



Bus stop hospital

©Julia Marmulla

Distance from the train/bus platform/ship pier to the entrance area for people with disabilities: 170 m

Width of the manoeuvring space along the train/bus platform/ship pier: 500 cm

There are seating areas available.

There is written train/bus platform/ship pier information available.

Way from the bus stop to the tourist information office



Way from the bus stop to the tourist information office

©Julia Marmulla



Way from the bus stop to the tourist information office

©Julia Marmulla



Way from the bus stop to the tourist information office

©Julia Marmulla



Way from the bus stop to the tourist information office

©Julia Marmulla



Way from the bus stop to the tourist information office

©Julia Marmulla



Way from the bus stop to the tourist information office

©Julia Marmulla

Width of the path: 180 cm

Length of the path: 170 m

Due to its surface characteristics, the path is not vibration-free and easy to walk on (e.g. asphalt, narrow-jointed slabs, etc.).

The path's clear width is limited on account of equipment.

The path's clear width is at least: 120 cm despite existing equipment

Maximum longitudinal gradient of the path: 6 %

Maximum longitudinal gradient over a distance of 3 m.

Entrance



Entrance

©Julia Marmulla



Entrance

©Julia Marmulla

Entrance round arch



Entrance round arch

©Julia Marmulla



Entrance round arch

©Julia Marmulla



Entrance round arch

©Gisela Moser

The entrance / access to the building is possible without steps.

Corridor in the entrance area: round arch – lift/stairs to the underground car park – tourist information office



Corridor in the entrance area: round arch – lift/stairs to the underground car park – tourist information office

©Julia Marmulla



Corridor in the entrance area: round arch – lift/stairs to the underground car park – tourist information office

©Julia Marmulla



Corridor in the entrance area: round arch – lift/stairs to the underground car park – tourist information office

©Julia Marmulla

Length of the corridor/way/aisle: 15 m

Minimum width of the corridor/way/aisle: 200 cm

Existing passageways are at least 88 cm wide.

Consultation room Tourist Information



Consultation room
Tourist Information

©Gisela Moser

Consultation room Tourist Information



Consultation room
Tourist Information

©Julia Marmulla



Consultation room
Tourist Information

©Gisela Moser



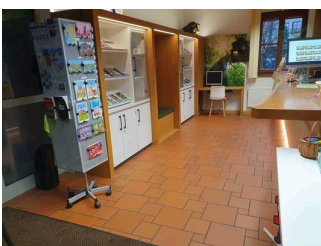
Consultation room
Tourist Information

©Gisela Moser



Consultation room
Tourist Information

©Gisela Moser



Consultation room
Tourist Information

©Gisela Moser

Door to the room

Clear width of the passageway: 106 cm

Type of door: single leaf

The door is opened without using any force (lever handle, light barrier sensor, motion detector, etc.).

The WIDTH of the smaller manoeuvring area in front of / behind the door: 200 cm

The DEPTH of the smaller manoeuvring area in front of / behind the door: 200 cm

The threshold height: 0 cm

The WIDTH of the room: 4 m

The DEPTH of the room: 7 m

The width of the narrowest passageway in the room: 180 cm

There is seating available.

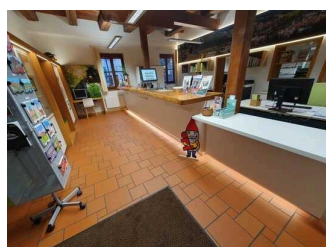
Consulting counter



Consulting counter

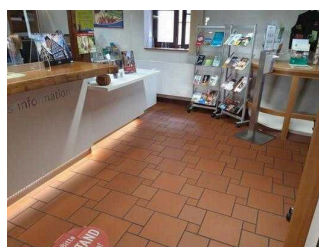
©Gisela Moser

Consulting counter



Consulting counter

©Gisela Moser



Consulting counter

©Julia Marmulla

The WIDTH of the manoeuvring space in front of the counter: 200 cm

The DEPTH of the manoeuvring space in front of the counter: 180 cm

The counter / cash desk is at its highest point 110 cm high.

The counter / cash desk is at its lowest point 85 cm high.

There is another, equivalent communication possibility while in a sitting position.

Public WC for people with disabilities in the underground car park, floor 5



Public WC for people with disabilities in the underground car park, floor 5

©Gisela Moser



Public WC for people with disabilities in the underground car park, floor 5

©Gisela Moser

Public WC for people with disabilities in the underground car park, floor 5



Public WC for people with disabilities in the underground car park, floor 5

©Gisela Moser



Public WC for people with disabilities in the underground car park, floor 5

©Gisela Moser



Public WC for people with disabilities in the underground car park, floor 5

©Julia Marmulla

Door to public toilet

Clear width of the passageway: 82 cm

Type of door: single leaf

The door is opened requiring the users own effort.

The WIDTH of the smaller manoeuvring area in front of / behind the door: 90 cm

The DEPTH of the smaller manoeuvring area in front of / behind the door: 130 cm

The threshold height: 0 cm

The door opens outwards.

The toilet door can be opened with a Euro-key.

Toilet/WC

There is a uni-sex toilet.

There is a toilet available for people with disabilities.

The depth of the toilet bowl: 56 cm

The WIDTH of the manoeuvring space left of the toilet: 23 cm

The DEPTH of the manoeuvring space left of the toilet: 56 cm

The WIDTH of the manoeuvring space right of the toilet: 130 cm

The DEPTH of the manoeuvring space right of the toilet: 56 cm

The WIDTH of the manoeuvring space in front of the toilet: 110 cm

The DEPTH of the manoeuvring space in front of the toilet: 80 cm

The height of the toilet seat: 49 cm

There is a grab rail on the left side of the toilet.

The height of the left grab rail: 83 cm

The length of the left grab rail: 42 cm

The grab rail on the left of the toilet cannot be flipped-up.

There is a grab rail on the right side of the toilet.

The height of the right grab rail: 83 cm

The length of the right grab rail: 60 cm

The grab rail on the right of the toilet can be flipped-up.

There are grab rails available on the right and left of the toilet.

The distance between the left and right grab rail is 78 cm.

Additional information only available in German: A Euro key can be borrowed from the Tourist Information Centre.

Washbasin/sink

The WIDTH of the manoeuvring space in front of the sink: 130 cm

The DEPTH of the manoeuvring space in front of the sink: 90 cm

The height of the sink (front upper edge): 89 cm

The sink is wheelchair compatible at a height of 67 cm and a depth of less than 30 cm.

The mirror can be seen while standing or sitting.

Stairs from floor 5 of the underground car park to the tourist information office



Stairs from floor 5 of the underground car park to the tourist information office

©Julia Marmulla



Stairs from floor 5 of the underground car park to the tourist information office

©Julia Marmulla

Existing thresholds/steps: 22

The height of the thresholds/steps: 17 cm

The stairs are not straight.

The staircase has handrails on both sides.

Elevator from floor 5 to the tourist information office



Elevator from floor 5 to the tourist information office

©Julia Marmulla



Elevator from floor 5 to the tourist information office

©Gisela Moser



Elevator from floor 5 to the tourist information office

©Gisela Moser

The WIDTH of the manoeuvring space in front of the elevator when entering: 200 cm

The DEPTH of the manoeuvring space in front of the elevator when entering: 200 cm

Clear passage width of the elevator door: 80 cm

The WIDTH of the cabin inside: 110 cm

The DEPTH of the cabin inside: 140 cm

The WIDTH of the manoeuvring space in front of the elevator when exiting: 178 cm

The DEPTH of the manoeuvring space in front of the elevator when exiting: 200 cm

There is no horizontal control panel.

The control elements/control units are arranged as follows:

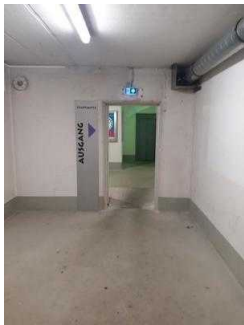
The HIGHEST position of the controls: 119 cm

The LOWEST position of the controls: 80 cm

The horizontal distance from the corner of the cabin to the first control element (central) is 40 cm.

Corridor/way/aisle inside

Corridor on floor 5 of the underground car park



Corridor on floor 5 of the underground car park

©Julia Marmulla



Corridor on floor 5 of the underground car park

©Julia Marmulla

Length of the corridor/way/aisle: 15 m

Minimum width of the corridor/way/aisle: 200 cm

Existing passageways are at least 88 cm wide.

Corridor in the entrance area: round arch – lift/stairs to the underground car park – tourist information office



Corridor in the entrance area: round arch – lift/stairs to the underground car park – tourist information office

©Julia Marmulla



Corridor in the entrance area: round arch – lift/stairs to the underground car park – tourist information office

©Julia Marmulla



Corridor in the entrance area: round arch – lift/stairs to the underground car park – tourist information office

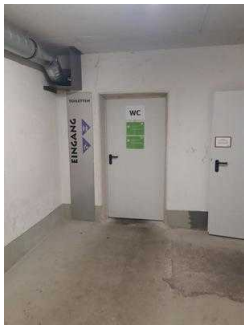
©Julia Marmulla

Length of the corridor/way/aisle: 15 m

Minimum width of the corridor/way/aisle: 200 cm

Existing passageways are at least 88 cm wide.

Door to the WC anteroom



Door to the WC anteroom

©Julia Marmulla

Clear width of the passageway: 91 cm

Type of door: single leaf

The door is opened requiring the users own effort.

The WIDTH of the smaller manoeuvring area in front of / behind the door: 200 cm

The DEPTH of the smaller manoeuvring area in front of / behind the door: 200 cm

The threshold height: 0 cm

Alarm/Auxiliary

Alarm/Auxiliary

Assistance dogs (companion dogs, guide dogs etc.) are allowed in all relevant areas/rooms of the establishment/offer.

Aids are offered.

Reading aids (reading glasses, magnifying glasses, etc.),

Guided tours

Guided tours

Guided tours are offered for people with walking impairments.

Guided tours are offered for wheelchair users.

The guides are trained so that wheelchair users can participate in any guided tour.

A reservation for the guided tour is necessary.

There are mobile or fixed seats available for people with walking impairments, which can be used during the guided tour.

The entire route of the guided tour is accessible for wheelchair users.