

Tourist Information Lohr am Main

Schlossplatz 5
97816 Lohr am Main

Tel: +49 9352 848465

tourismus@lohr.de
<http://www.lohr.de>

Comfort for all generations

Information on accessibility was evaluated and verified on October 9, 2024.

Images of the building/object



Tourist Information
Lohr am Main

©Julia Marmulla



Tourist Information
Lohr am Main

©Julia Marmulla

Parking lot for people with disabilities



Parking lot for people
with disabilities

©Gisela Moser

Parking lot for people with disabilities



Parking lot for people
with disabilities

©Gisela Moser



Parking lot for people
with disabilities

©Julia Marmulla

There is a general parking lot available.

Path from the parking lot for people with disabilities to the tourist information office



Path from the parking lot for people with disabilities to the tourist information office

©Gisela Moser



Path from the parking lot for people with disabilities to the tourist information office

©Gisela Moser



Path from the parking lot for people with disabilities to the tourist information office

©Gisela Moser

Length of the path: 60 m

Due to its surface characteristics, the path is not vibration-free and easy to walk on (e.g. asphalt, narrow-jointed slabs, etc.).

Maximum longitudinal gradient of the path: 0 %

Maximum longitudinal gradient over a distance of 60 m.

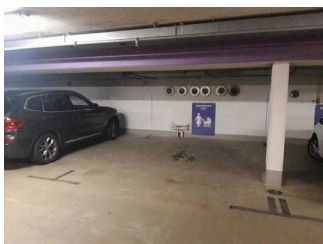
There is no seating available.

Neither the objective of the path is within sight, nor is there an uninterrupted guidance system or signs in visible distance.

Additional information only available in German: The path runs without a sidewalk across a play street (walking speed).

Additional parking in the underground car park

Additional parking in the underground car park – floor 5



Additional parking in the underground car park – floor 5

©Julia Marmulla



Additional parking in the underground car park – floor 5

©Julia Marmulla

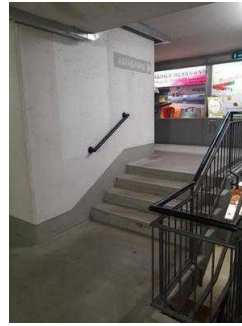
There is a general parking lot available.

Stairs from floor 5 of the underground car park to the tourist information office



Stairs from floor 5 of the underground car park to the tourist information office

©Julia Marmulla



Stairs from floor 5 of the underground car park to the tourist information office

©Julia Marmulla

Existing thresholds/steps: 22

The height of the thresholds/steps: 17 cm

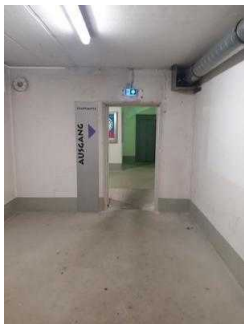
The stairs are not straight.

The staircase has handrails on both sides.

The stairs are well lit and glare-free.

Corridor/way/aisle inside

Corridor on floor 5 of the underground car park



Corridor on floor 5 of the underground car park

©Julia Marmulla



Corridor on floor 5 of the underground car park

©Julia Marmulla

Minimum width of the corridor/way/aisle: 200 cm

There is an uninterrupted guidance system.

Corridor in the entrance area: round arch – lift/stairs to the underground car park – tourist information office



Corridor in the entrance area: round arch – lift/stairs to the underground car park – tourist information office

©Julia Marmulla



Corridor in the entrance area: round arch – lift/stairs to the underground car park – tourist information office

©Julia Marmulla



Corridor in the entrance area: round arch – lift/stairs to the underground car park – tourist information office

©Julia Marmulla

Minimum width of the corridor/way/aisle: 200 cm

The objective of the path is within sight.

Bus stop hospital



Bus stop hospital

©Julia Marmulla

Bus stop hospital



Bus stop hospital

©Julia Marmulla



Bus stop hospital

©Julia Marmulla



Bus stop hospital

©Julia Marmulla



Bus stop hospital

©Julia Marmulla

There are seating areas available.

There is written train/bus platform/ship pier information available.

There is no audible train/bus platform/ship pier information available.

Way from the bus stop to the tourist information office



Way from the bus stop to the tourist information office

©Julia Marmulla



Way from the bus stop to the tourist information office

©Julia Marmulla



Way from the bus stop to the tourist information office

©Julia Marmulla



Way from the bus stop to the tourist information office

©Julia Marmulla



Way from the bus stop to the tourist information office

©Julia Marmulla



Way from the bus stop to the tourist information office

©Julia Marmulla

Length of the path: 170 m

Due to its surface characteristics, the path is not vibration-free and easy to walk on (e.g. asphalt, narrow-jointed slabs, etc.).

Maximum longitudinal gradient of the path: 6 %

Maximum longitudinal gradient over a distance of 3 m.

There is seating available.

There is an uninterrupted guidance system.

Entrance



Entrance

©Julia Marmulla



Entrance

©Julia Marmulla

Entrance round arch



Entrance round arch

©Julia Marmulla



Entrance round arch

©Julia Marmulla



Entrance round arch

©Gisela Moser

Corridor in the entrance area: round arch – lift/stairs to the underground car park – tourist information office



Corridor in the entrance area: round arch – lift/stairs to the underground car park – tourist information office

©Julia Marmulla



Corridor in the entrance area: round arch – lift/stairs to the underground car park – tourist information office

©Julia Marmulla



Corridor in the entrance area: round arch – lift/stairs to the underground car park – tourist information office

©Julia Marmulla

Minimum width of the corridor/way/aisle: 200 cm

The objective of the path is within sight.

Consultation room Tourist Information



Consultation room
Tourist Information

©Gisela Moser

Consultation room Tourist Information



Consultation room
Tourist Information

©Julia Marmulla



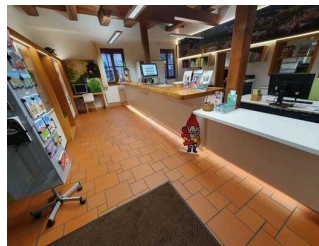
Consultation room
Tourist Information

©Gisela Moser



Consultation room
Tourist Information

©Gisela Moser



Consultation room
Tourist Information

©Gisela Moser



Consultation room
Tourist Information

©Gisela Moser

Door to the room

The door is opened without using any force (lever handle, light barrier sensor, motion detector, etc.).

The door or door frame is visually contrasted to its surroundings.

Glass doors are not marked with safety markings.

The threshold height: 0 cm

The WIDTH of the room: 4 m

The DEPTH of the room: 7 m

There is seating available.

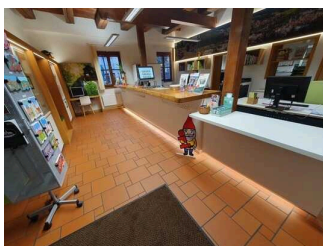
Consulting counter



Consulting counter

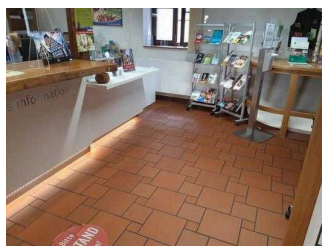
©Gisela Moser

Consulting counter



Consulting counter

©Gisela Moser



Consulting counter

©Julia Marmulla

The counter / cash desk is at its highest point 110 cm high.

The counter / cash desk is at its lowest point 85 cm high.

There is another, equivalent communication possibility while in a sitting position.

Public WC for people with disabilities in the underground car park, floor 5



Public WC for people with disabilities in the underground car park, floor 5

©Gisela Moser



Public WC for people with disabilities in the underground car park, floor 5

©Gisela Moser

Public WC for people with disabilities in the underground car park, floor 5



Public WC for people with disabilities in the underground car park, floor 5

©Gisela Moser



Public WC for people with disabilities in the underground car park, floor 5

©Gisela Moser



Public WC for people with disabilities in the underground car park, floor 5

©Julia Marmulla

Door to public toilet

The door is opened requiring the users own effort.

The door or door frame is not visually contrasted to its surroundings.

The threshold height: 0 cm

Toilet/WC

There is a uni-sex toilet.

There is a toilet available for people with disabilities.

Washbasin/sink

Stairs from floor 5 of the underground car park to the tourist information office



Stairs from floor 5 of the underground car park to the tourist information office

©Julia Marmulla



Stairs from floor 5 of the underground car park to the tourist information office

©Julia Marmulla

Existing thresholds/steps: 22

The height of the thresholds/steps: 17 cm

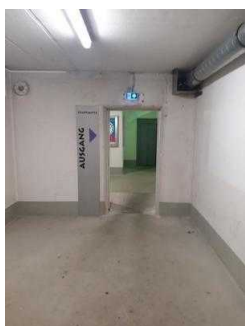
The stairs are not straight.

The staircase has handrails on both sides.

The stairs are well lit and glare-free.

Corridor/way/aisle inside

Corridor on floor 5 of the underground car park



Corridor on floor 5 of the underground car park

©Julia Marmulla



Corridor on floor 5 of the underground car park

©Julia Marmulla

Minimum width of the corridor/way/aisle: 200 cm

There is an uninterrupted guidance system.

Corridor in the entrance area: round arch – lift/stairs to the underground car park – tourist information office



Corridor in the entrance area: round arch – lift/stairs to the underground car park – tourist information office

©Julia Marmulla



Corridor in the entrance area: round arch – lift/stairs to the underground car park – tourist information office

©Julia Marmulla



Corridor in the entrance area: round arch – lift/stairs to the underground car park – tourist information office

©Julia Marmulla

Minimum width of the corridor/way/aisle: 200 cm

The objective of the path is within sight.

Door to the WC anteroom



Door to the WC anteroom

©Julia Marmulla

The door is opened requiring the users own effort.

The door or door frame is not visually contrasted to its surroundings.

The threshold height: 0 cm

Alarm/Auxiliary

Alarm/Auxiliary

There is an alarm.

There is no clearly visible alarm.

Aids are offered.

Reading aids (reading glasses, magnifying glasses, etc.),

Guided tours

Guided tours

The guides are trained so that people with walking impairments can participate in any guided tour.

There are mobile or fixed seats available for people with walking impairments, which can be used during the guided tour.

The entire route of the guided tour is accessible for wheelchair users.